

Angular Contact Ball Bearings

Bearing No. : **NACHI 7240**

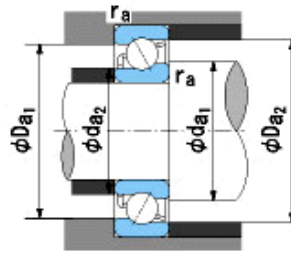
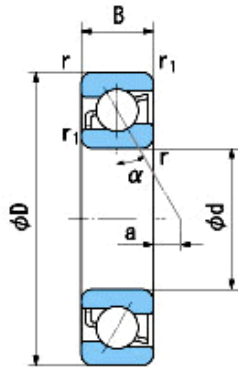
■ Bearing Type

■ Clearance

■ Tolerance Class

Dimensions

d = 200⁰_{-0.030}
 D = 360⁰_{-0.040}
 B = 58⁰_{-0.300}
 r = 4~6.5
 (Radial Direction)
 r = 4~9
 (Axial Direction)
 r1 = 1.5~3
 (Radial Direction)
 r1 = 1.5~5
 (Axial Direction)
 a = 51.8



Dimensions

da1(min) = 218
 da2(min) = 209
 Da1(max) = 342
 Da2(max) = 351
 ra(max) = 3
 ra1(max) = 1.5
 Mass = 25.5 kg

Basic Dynamic Load Rating Cr : **335,000** N

Basic Static Load Rating Cor : **450,000** N

Limiting Speed ;

Grease Lubrication : **1,500** min⁻¹

Oil Lubrication : **2,000** min⁻¹

	INNER RING	OUTER RING
O.D.Surface Runout with Side :		-
Axial Runout with Bore :	-	-
Axial Runout with Raceway :	-	-
Width Variation :	0.030	0.030
Radial Runout :	0.040	0.070